

- U.S.G.A. Rules shall govern all play except where modified by local rules.
- Out of Bounds: Defined by white stakes and inside edge of roads and parking lot.
- Measuring devices may be used for measuring distance only.
- If a ball lies off the putting green but not in a hazard and an immovable obstruction on or within two club-lengths of the putting green and within two club-lengths of the ball intervenes on the line of play, the player may drop the ball at the nearest point of relief no nearer the hole.
- Any ball that comes to rest on a practice green must be dropped within one club-length of the nearest point of of relief, no penalty.

#### LADIES' RATINGS

TEE	COURSE	SLOPE
Black	75.3	130
Gold	71.4	126
Red	66.9	115

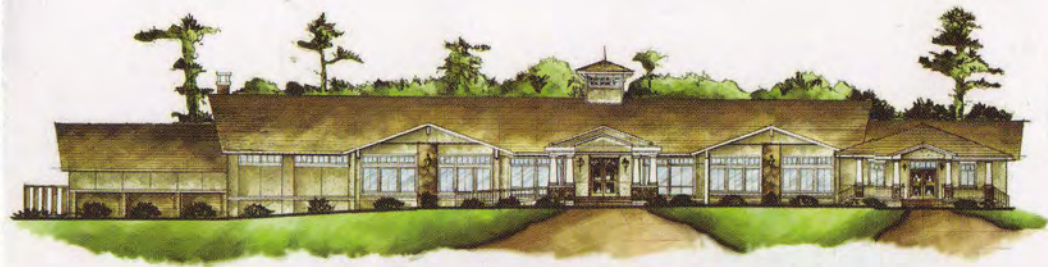


*Ellis Maples (1961)  
Richard Mandell (2009)*



*David Lackey  
Head Golf Professional*

*Thomas Green  
Superintendent*



Official Scorecard



ORANBURG COUNTRY CLUB  
Pro Shop - (803) 534-6069  
[www.oranburgcc.com](http://www.oranburgcc.com)

TP  
PLAYED  
#

HOLE	1	2	3	4	5	6	7	8	9	OUT	INITIALS	10	11	12	13	14	15	16	17	18	IN	TOT	HCP	NET
1/Orange 73.3/130	376	504	181	413	398	204	430	497	382	3385		404	533	172	470	442	453	364	194	615	3647	7032		
2/Blue 71.2/126	347	494	174	391	358	192	406	480	366	3208		382	519	154	438	418	427	332	184	567	3421	6629		
3/Black 68.8/120	309	488	166	350	333	174	368	462	324	2974		361	475	136	404	382	392	290	166	512	3118	6092		
Mens Handicap	7	13	17	5	3	11	1	15	9			8	14	16	2	6	4	18	12	10				


Par	4	5	3	4	4	3	4	5	4	36		4	5	3	4	4	4	4	3	5	36	72		
-----	---	---	---	---	---	---	---	---	---	----	--	---	---	---	---	---	---	---	---	---	----	----	--	--


Ladies' Handicap	9	1	17	11	5	15	7	3	13		INITIALS	10	2	18	6	12	8	14	16	4				
4/Gold 64.4/111	252	430	136	310	301	160	328	405	294	2616		319	439	128	358	340	349	259	150	410	2752	5368		
5/Red 62.5/104	228	354	116	273	249	135	281	345	289	2270		265	372	120	331	299	315	220	116	363	2401	4671		

DATE:

SCORER:

ATTEST: